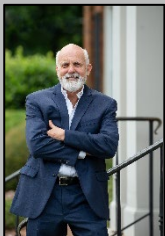


# RIVERSIDE CROSSING PROFESSIONAL BUILDING

4875 RIVERSIDE DRIVE  
MACON, GA 31210  
BIBB COUNTY

2 SUITES  
5,320 SF

**LEASE RATE:**  
**\$18/SF** FULL SERVICE



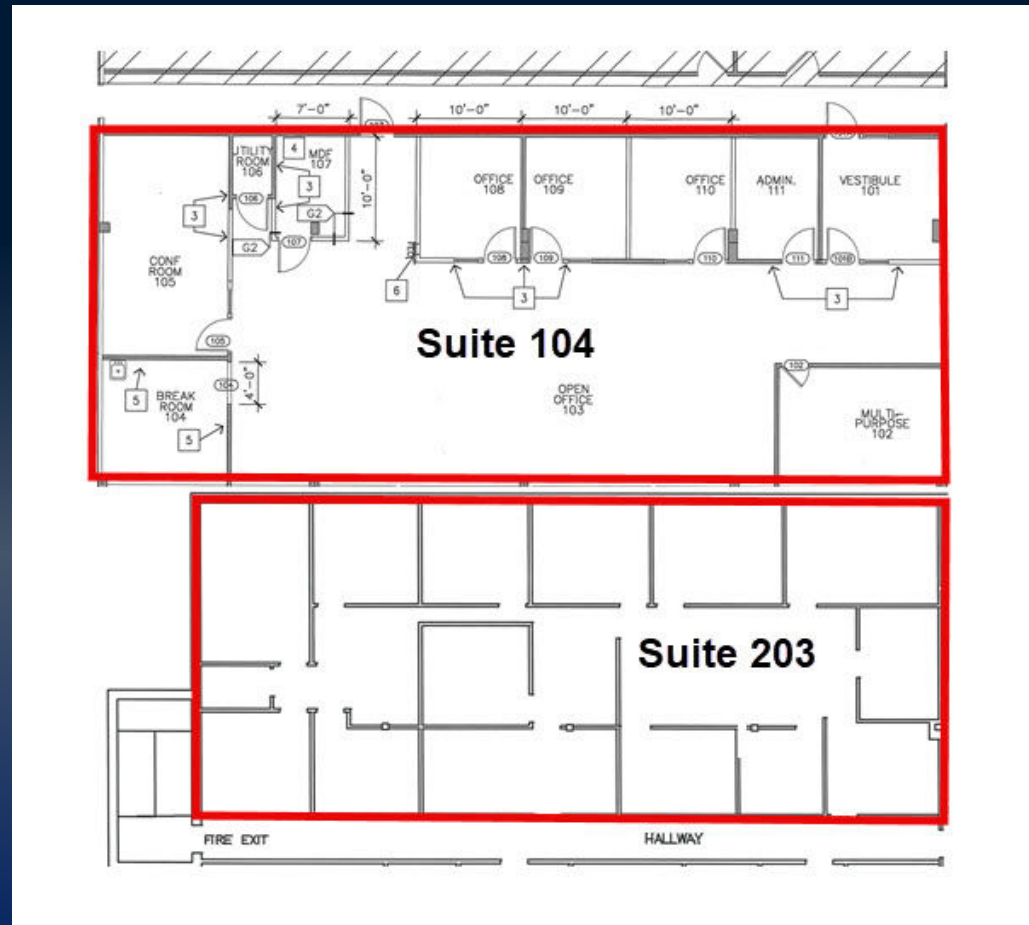
STERLING BAILEY C: 478-951-9443 | KEVIN HARKINS C: 478.338.0623  
SBAILEY@THESUMMITGROUPMACON.COM | KHARKINS@THESUMMITGROUPMACON.COM  
4124 ARKWRIGHT ROAD, SUITE 1, MACON, GA 31210  
O: 478.750.7507

WWW.THESUMMITGROUPMACON.COM



## PROPERTY INFORMATION

- Two Suites available (104 & 203) totaling  $\pm$  5,320 SF
- **Suite 104** -  $\pm$  2,720 SF (First floor)
- **Suite 203** -  $\pm$  2,600 SF (Second floor)
- Zoned C-2 (Commercial)
- 170 parking spaces
- Easy access from interstate 75 Exit 171, Riverside Drive & Sheraton Drive
- Other area businesses include the Shoppes at River Crossin, several car dealerships, offices, & hotels
- High traffic location at a signalized intersection of Sheraton Drive & Riverside Drive



4875 RIVERSIDE DRIVE MACON, GA 31210 BIBB COUNTY





- Barnes & Noble
- Belk
- Bonefish Grill
- Dick's Sporting Goods
- Dillard's
- DSW
- H&M
- Hallmark
- Jo-Ann Fabrics & Crafts
- Jos. A. Bank
- Kay Jewelers
- Kirkland's
- La Parilla
- New York & Company
- Reed's Jewelers
- Simply Mac
- Texas Roadhouse
- Ulta
- Wild Wing Cafe
- Yankee Candle
- and more!

# 4875 RIVERSIDE DRIVE MACON, GA 31210 BIBB COUNTY



The information contained herein has been compiled from various sources, both private and public. It is accurate and complete only to the extent to which The Summit Group has been able to ascertain from third party sources. As such, no warranty or guarantee is given or implied with regard to the accuracy or completeness of any information contained herein. Any interested party shall be required to conduct its own due diligence and investigations to verify, review, audit, or otherwise insure the information contained herein.



**4875 RIVERSIDE DRIVE MACON, GA 31210 BIBB COUNTY**



*The information contained herein has been compiled from various sources, both private and public. It is accurate and complete only to the extent to which The Summit Group has been able to ascertain from third party sources. As such, no warranty or guarantee is given or implied with regard to the accuracy or completeness of any information contained herein. Any interested party shall be required to conduct its own due diligence and investigations to verify, review, audit, or otherwise insure the information contained herein.*

SUITE 104  
(FIRST FLOOR)  
PHOTOS



4875 RIVERSIDE DRIVE MACON, GA 31210 BIBB COUNTY



*The information contained herein has been compiled from various sources, both private and public. It is accurate and complete only to the extent to which The Summit Group has been able to ascertain from third party sources. As such, no warranty or guarantee is given or implied with regard to the accuracy or completeness of any information contained herein. Any interested party shall be required to conduct its own due diligence and investigations to verify, review, audit, or otherwise insure the information contained herein.*

SUITE 203  
(SECOND FLOOR)  
PHOTOS



4875 RIVERSIDE DRIVE MACON, GA 31210 BIBB COUNTY



*The information contained herein has been compiled from various sources, both private and public. It is accurate and complete only to the extent to which The Summit Group has been able to ascertain from third party sources. As such, no warranty or guarantee is given or implied with regard to the accuracy or completeness of any information contained herein. Any interested party shall be required to conduct its own due diligence and investigations to verify, review, audit, or otherwise insure the information contained herein.*