

# STUDENT HOUSING / MULTI-FAMILY DEVELOPMENT

OGDEN STREET, 3<sup>RD</sup>, AVENUE, & CREIGHTON STREET EASTMAN, GA 31023  
DODGE COUNTY



**BUILDINGS CAN BE SOLD SEPARATELY | CALL FOR PRICING**

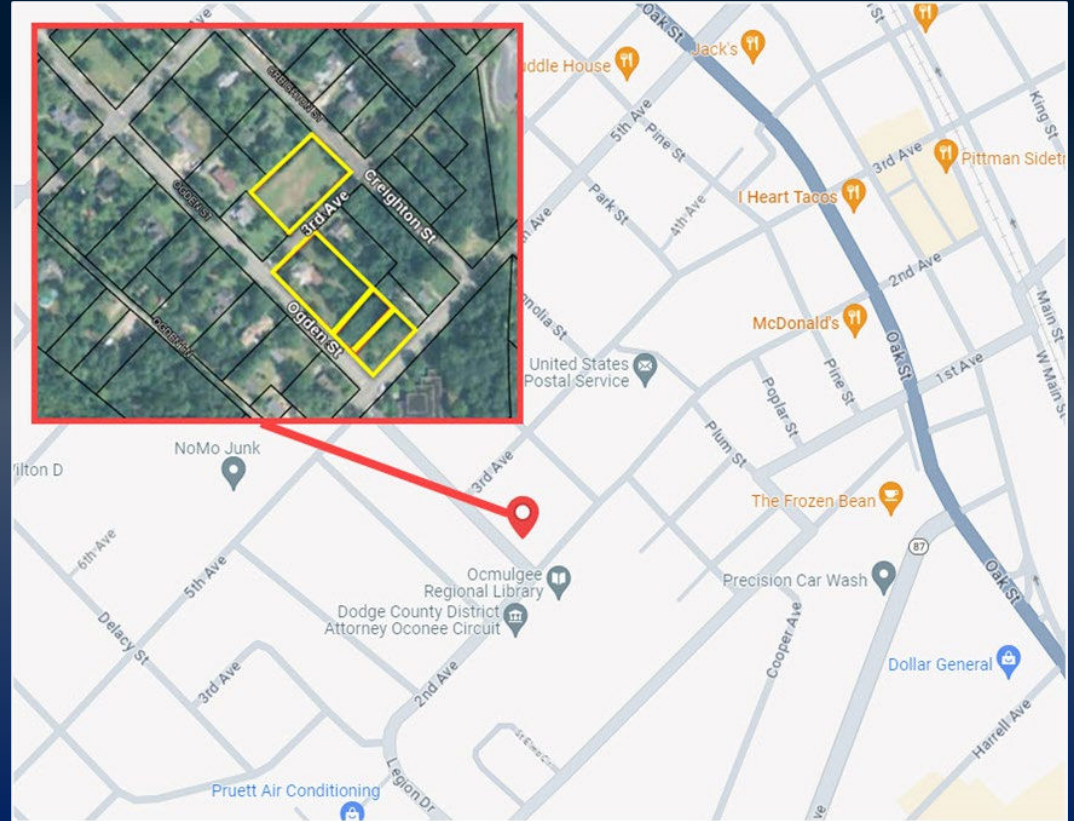


**DEREK FOSTER C: 478.997.1024**  
DFOSTER@THESUMMITGROUPMACON.COM  
4124 ARKWRIGHT ROAD, SUITE 1 MACON, GA 31210  
**O: 478.750.7507**  
WWW.THESUMMITGROUPMACON.COM



## PROPERTY INFORMATION

- Investment property
- 4 parcels
- Located in downtown Eastman, 3.6 miles from Middle GA State University
- New construction plans for a single level, multi-family development
- Total of 10 doors, 5 buildings & 40 possible bedrooms
- College campus provides the opportunity for the units to be rented by room



OGDEN STREET, 3<sup>RD</sup> AVENUE & CREIGHTON STREET  
EASTMAN, GA 31023



## PROPERTY INFORMATION

### Middle GA State University Eastman Campus

- The only campus in the University System of GA that includes flight training and airport management programs
- Located adjacent to The Heart of Georgia Regional Airport
- Offers bachelor's & associate's degrees and certificates related to aviation

Source: <https://www.mga.edu/about/campuses/eastman.php>



OGDEN STREET, 3<sup>RD</sup> AVENUE & CREIGHTON STREET  
EASTMAN, GA 31023





OGDEN STREET, 3<sup>RD</sup> AVENUE & CREIGHTON STREET  
EASTMAN, GA 31023





OGDEN STREET, 3<sup>RD</sup> AVENUE & CREIGHTON STREET  
EASTMAN, GA 31023





OGDEN STREET, 3<sup>RD</sup> AVENUE & CREIGHTON STREET  
EASTMAN, GA 31023





OGDEN STREET, 3<sup>RD</sup> AVENUE & CREIGHTON STREET  
EASTMAN, GA 31023

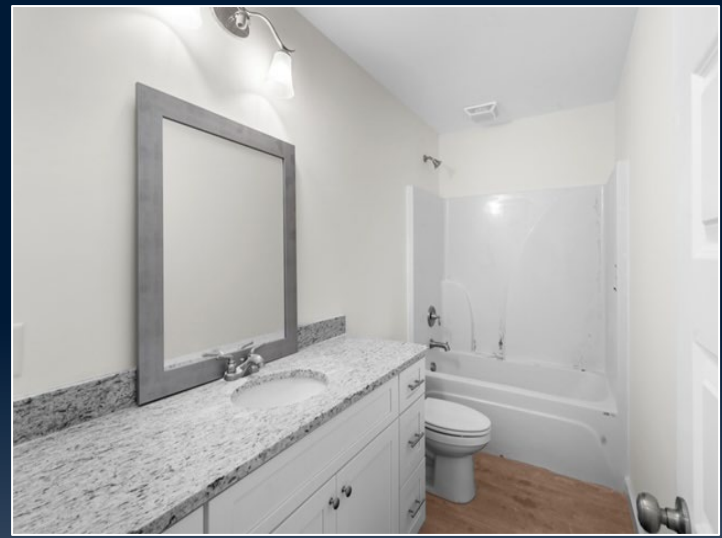
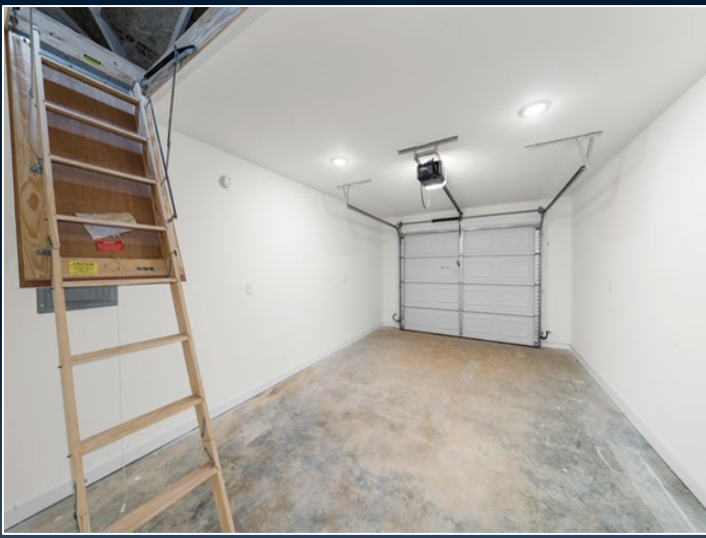




OGDEN STREET, 3<sup>RD</sup> AVENUE & CREIGHTON STREET  
EASTMAN, GA 31023







OGDEN STREET, 3<sup>RD</sup> AVENUE & CREIGHTON STREET  
EASTMAN, GA 31023





OGDEN STREET, 3<sup>RD</sup> AVENUE & CREIGHTON STREET  
EASTMAN, GA 31023

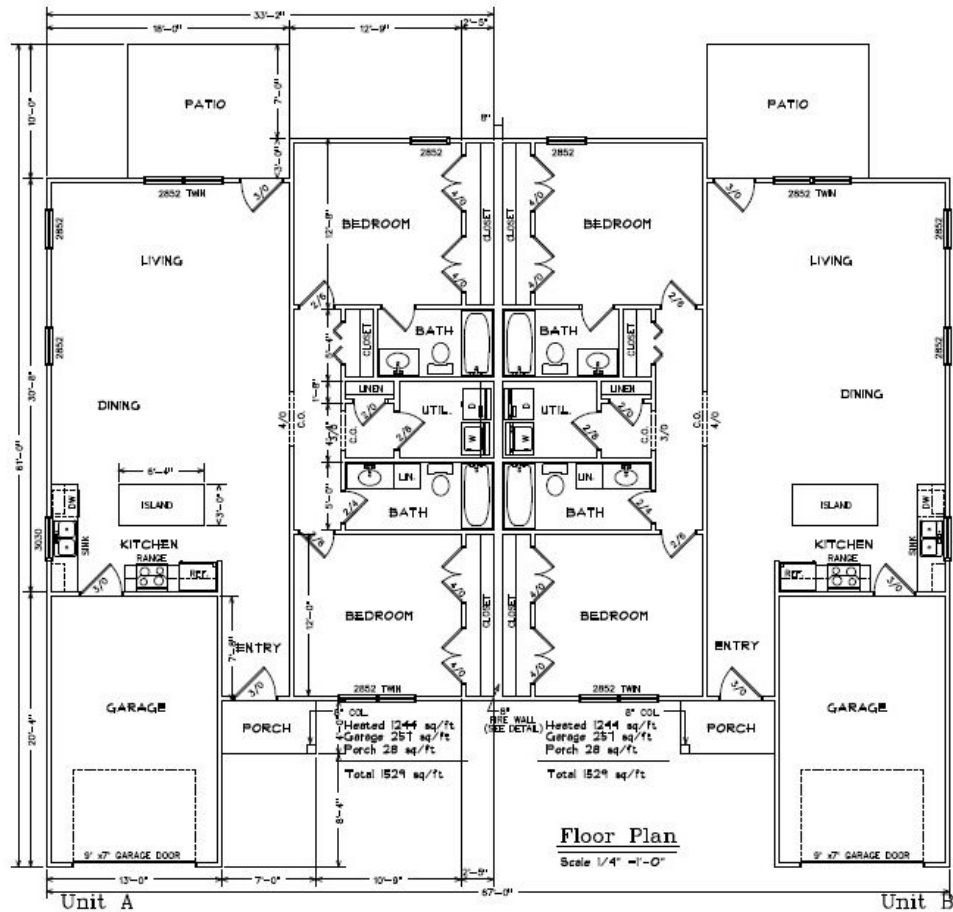




OGDEN STREET, 3<sup>RD</sup> AVENUE & CREIGHTON STREET  
EASTMAN, GA 31023



# Floor Plan



OGDEN STREET, 3<sup>RD</sup> AVENUE & CREIGHTON STREET  
EASTMAN, GA 31023

