

PRE-LEASING | THE ENCORE AT THE PARKWAY

1904 HOUSTON LAKE ROAD, PERRY, GA 31069, HOUSTON COUNTY



LEASE RATE: \$32/SF NNN

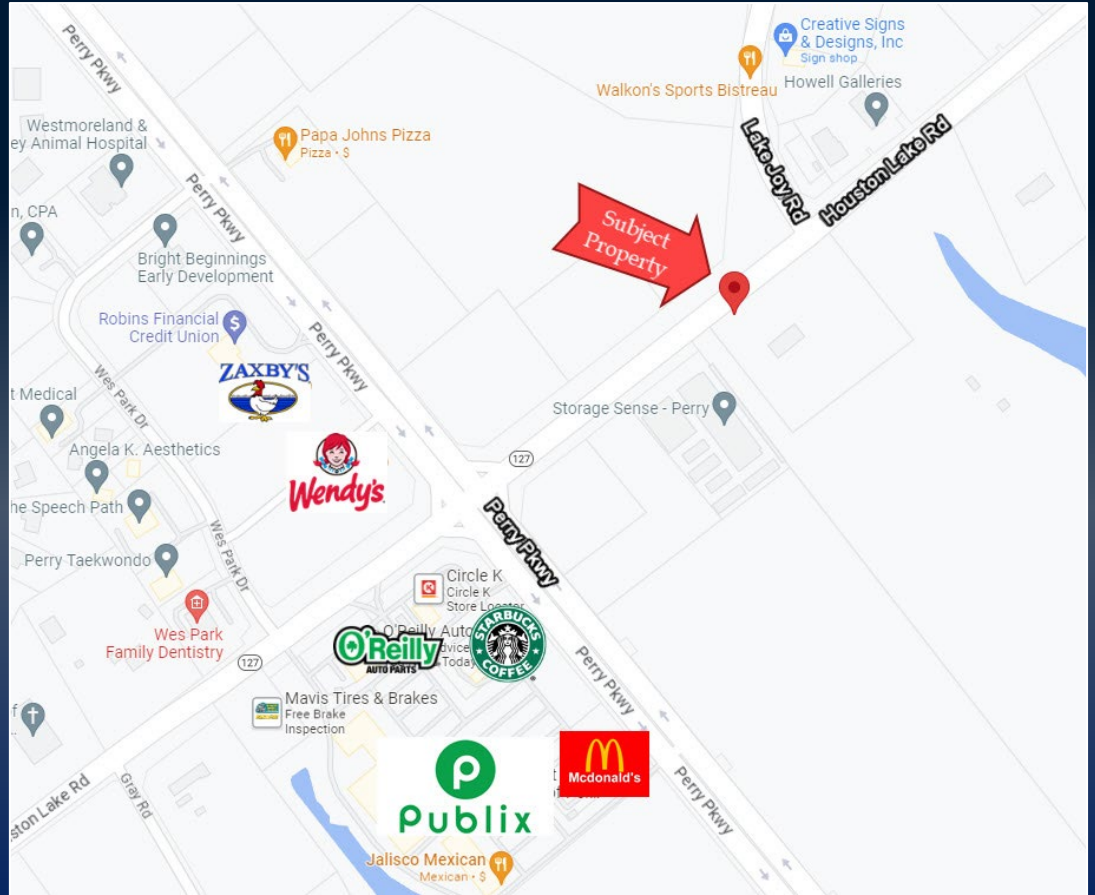


KEVIN HARKINS C: 478.338.0623
KHARKINS@THESUMMITGROUPMACON.COM
4124 ARKWRIGHT ROAD, SUITE 1, MACON, GA 31210
O: 478.750.7507
WWW.THESUMMITGROUPMACON.COM



PROPERTY INFORMATION

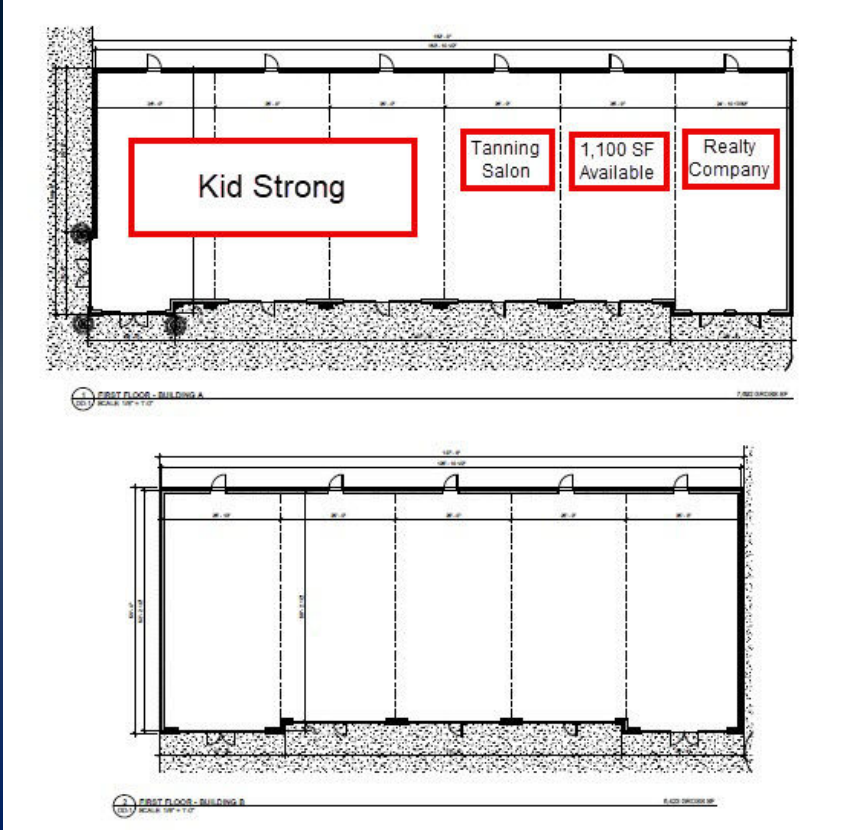
- ± 1,100 SF space available
- Total building size ±14,000 SF
- Additional units Coming Winter 2025
- Minimum 1,100 SF per unit
- Located at the signalized intersection of Houston Lake Road & Lake Joy Road
- Positioned at the entrance of a new ± 280-unit residential development
- Just down from Publix and the Paradise Shoppes of Perry



1904 HOUSTON LAKE ROAD, PERRY, GA 31069



FLOOR PLAN & ZONING PLAN



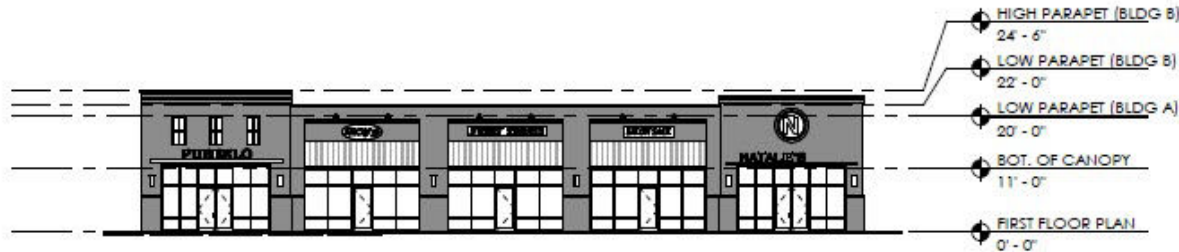
1904 HOUSTON LAKE ROAD, PERRY, GA 31069



ELEVATIONS



1 DD- FRONT ELEVATION
A3.0 SCALE: 1/16" = 1'-0"



2 DD- FRONT ELEVATION Copy 1
A3.0 SCALE: 1/16" = 1'-0"

The information contained herein has been compiled from various sources, both private and public. It is accurate and complete only to the extent to which The Summit Group has been able to ascertain from third party sources. As such, no warranty or guarantee is given or implied with regard to the accuracy or completeness of any information contained herein. Any interested party shall be required to conduct its own due diligence and investigations to verify, review, audit, or otherwise ensure the information contained herein.

PROGRESS PHOTO



The information contained herein has been compiled from various sources, both private and public. It is accurate and complete only to the extent to which The Summit Group has been able to ascertain from third party sources. As such, no warranty or guarantee is given or implied with regard to the accuracy or completeness of any information contained herein. Any interested party shall be required to conduct its own due diligence and investigations to verify, review, audit, or otherwise ensure the information contained herein.